

THE IRRESISTIBLE FLAMES OF MASPORT



GAS LOG FIRE FLUE MANUAL 2004

552338

ISSUE A, JANUARY 2004



AUSTRALIA
PO Box 533, Braeside, Victoria 3195
Ph. 1300 366 225 fax 1800 035 594
email sales@masport.com.au
www.masport.com.au

Masport®
gas & wood fires

Direct Vent Zero Clearance Top Exit Vertical Flue Kit

Product Description

Part Number

DV Zero Clearance
Top Exit Vertical Flue Kit

552325



Grenada (P36)



Calais (P36)

This kit contains: Gas Cowl DV, Slip Liner, Outer Liner 900mm x 4, Inner Flue Crimped 900mm x 4, Mil-Pac Sealant x 1

Will fit Masport Grenada & Calais Direct Vent Gas Fires

Direct Vent Zero Clearance Top Exit Vertical Flue Kit Installation Instructions



Gas Cowl

Inner Flue
100mm dia x
900mm x 4

Outer Heat
Shield
170mm dia
x 900mm x 4

This flue kit has been manufactured in accordance with AS5601 2002. To ensure safety this flue kit must be installed as outlined in these instructions. Heater and flue clearances from combustible walls and framing must be in accordance with Masport specifications.

- 1 Locate the heater in its proposed position and mark the point for penetration directly above the centre of the heaters flue outlet. Check that the heater location allows the outer heat shield to clear all structural timbers and combustible surfaces by **40mm minimum**.
- 2 Cut a 250mm Square hole where penetration is required using a mark as a guide. Fit **non-combustible** nogs in the ceiling space if required.
- 3 Measure overall length of outer heat shield and inner flue required. Fix outer heat shield lengths together using pop rivets or self-taping screws. Insert assembled lengths up through penetration hole; continue to add outer heat shield lengths.

The flue is required to be at least 500mm above the nearest point of the roof. It is recommended that in some instances, extending the flue above the ridgeline will be necessary. Refer to AS5601 2002 for more information.

- 4 Assemble the 100mm galvanized flue lengths together using pop rivets or self tapping screws ensuring all joints are sealed with Milpac sealer supplied. Lower the 100mm galvanized flue from the roof into the outer heat shield and onto the inner heater stub. Lift the outer heat shield to seal the inner heater flue stub with Milpac sealer supplied. Fix outer heat shield to heater stub.
- 5 Fit an appropriate weather seal around the flue Outer Heat Shield and seal to roofing material with appropriate sealer.
- 6 Check inner flue height at the top of the outer heat shield and fit gas cowl.
- 7 Start heater and run for at least 15 minutes to check inner flue seal (should heater drop out completely the inner flue is leaking)

Flue Kit Part Number: 558325

Note: It is the installer's responsibility to ensure that the installation complies with AS5601 2002 and all local body requirements

Will fit Masport Grenada & Calais Direct Vent Gas Fires

Direct Vent Inbuilt Horizontal Flue Kit

Product Description

Part Number

DV Horizontal Flue Kit

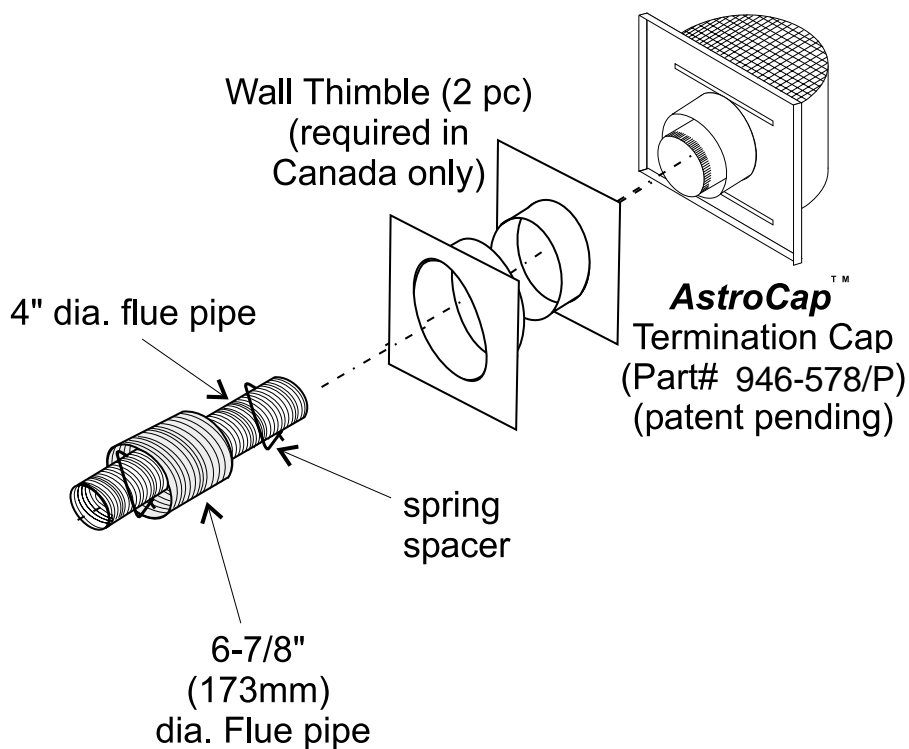
946-125



Grenada (P36)



Calais (P36)



Newport Pier (P131)



Newport (P121)

This kit contains: Astrocap (patent pending), Wall Thimble, 102mm dia. flue pipe, 175mm dia. flue pipe, Mil-Pac Sealant

WARNING:

When installing in a high wind situation, common sense must prevail. Choose a sheltered side of the house.

A non-combustible water ingress shelf will need to be fitted 200mm above the terminal to prevent water ingress in extreme conditions or where no soffit shelters the terminal.

Will fit Masport Grenada & Calais Direct Vent Gas Fires

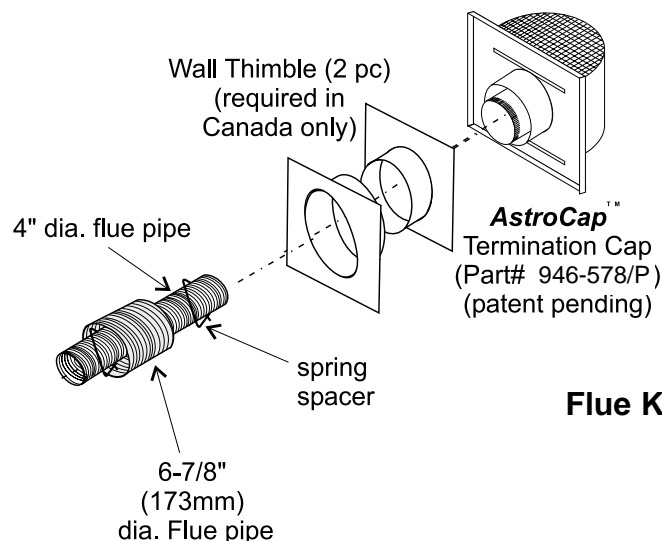
Direct Vent Zero Clearance Top and Rear Exit Horizontal Flue Kit Installation Instructions

This flue kit has been manufactured in accordance with AS5601 2002. To ensure safety this kit must be installed as outlined in these instructions. Heater and flue clearances from combustible surfaces and framing timber must be in accordance with Masport specifications. Note this flexi flue kit is only approved for horizontal installations.

- 1 Locate the heater in its proposed position and mark a position on the wall at 1029mm from the floor (or 1072mm for the Newport), which will be the centreline for the flexi flue. Check that the heaters location allows the thru wall penetration unit to clear all structural timber and the Astro flue cowl clearances complies with AS5601 2002 requirements as shown in the owners manual supplied with the heater.
- 2 Cut a 250mm square hole through the wall structure using a mark as a centerline. Nog if necessary for structural support. **A minimum of 50mm clearance is required between flexi flue outer heat shield and any combustible material.**
- 3 Measure overall flue length to ensure it complies with the minimum or maximum allowable length as shown in the owner manual supplied with the heater.
- 4 Assemble the Flexi flue system by applying Milpac sealer (supplied) to the inner collar of the Astro cowl and slipping the 100mm inner flexi liner over it by at least 35mm. Secure with three screws supplied (drill pilot holes first). Apply Milpac sealer to the 175mm flexi flue outer heat shield and slip it over the 170mm outer stub of the Astro cowl at least 35mm and secure with three screws supplied.

Note all flue joints must be sealed with the Milpac sealer supplied and the flue must rise from the heater a minimum of 10mm over every 600mm length of flue.

- 5 Separate the two halves of the Thru Wall Penetration Unit and secure the one with the tabs to the outside wall making sure the tabs are on the top and bottom. Secure the other thru wall penetration half to the inside wall (the halves slip inside each other). An intermediate shield may have to be added depending on wall depth (not supplied).
- 6 Inset the flexi flue through the wall penetration from outside. Pull the inner and outer flexi flue lengths out enough to slip over the flue collars of the heater (you may need to cut the liners to make it more workable). Do not bend the flexi flue more than 90 degrees. Apply Milpac sealer over the heater inner and outer collar. Slip the 100mm inner flexi flue over the collar and secure with three screws supplied, repeat the process for the flexi flue outer heat shield.
- 7 Seal around the Astro cowl on the outside wall to ensure water tightness
- 8 Start fire and run for at least 15 minutes to check inner flue seal (should fire drop out completely the inner flue is leaking)



Flue Kit Part Number: 946-125

Note: It is the installer's responsibility to ensure that the installation complies with AS5601 2002 and all local body requirements

Will fit Grenada, Calais, Newport and Newport Pier Direct Vent Gas Fires

Direct Vent Off Set and Extention Kit



Geneva Direct Vent



Grenada (P36)



Calais (P36)



**Off Set Kit - Room/Roof
(Zero Clearance)**

Part No: 552335



**Extension Kit - Room
(Painted)**

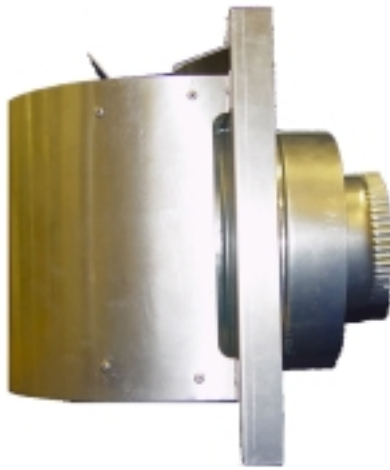
Part No: 552334

**Extension Kit - Roof
- Zero Clearance
(Unpainted)**

Part No: 588674

Will fit Masport Geneva, Roma, Grenada & Calais Gas Fires

Gas Flue Kit Accessories - D Vent



**Direct Vent Astro Cowl
Horizontal**

Part No: 946-578/P



**Direct Vent Cowl
Vertical**

Part No: 556679